

WTM1040G2 70 </ñAô =

6Q Á Ñ 4.1MPa

¶

e

ï

~

>6Û"17'70 </ñAô = ?L† ç .

---

f v Æ >6Û 8 ;"é P #8ç # ]F‰ 17 - +kB Æ0561-67126688

5‡ v Æ [www.mofenli.net](http://www.mofenli.net)

V-U Æ

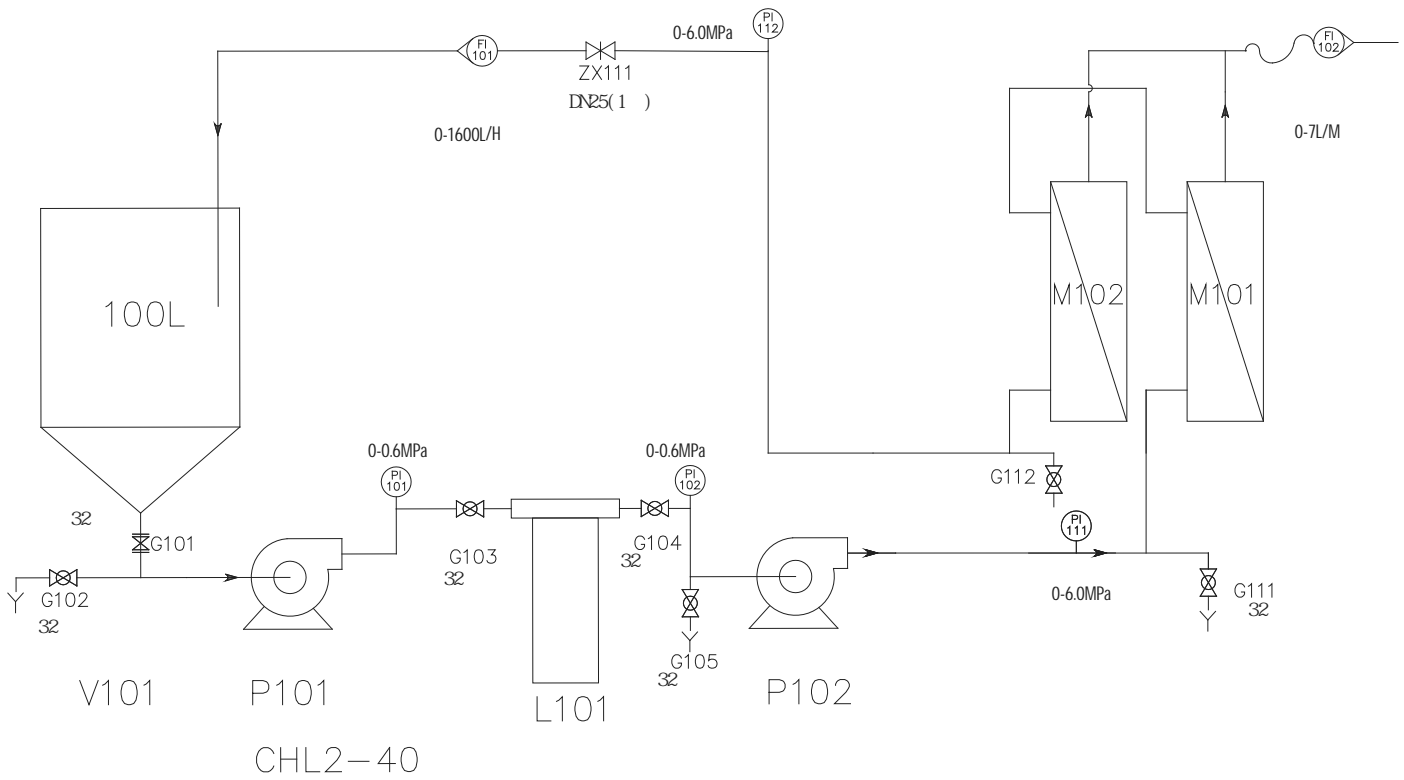
0551-63667960

.....	2.....
.....	2.....
.....	3.....
.....	4.....
.....	4.....
.....	5.....
.....	6.....
.....	7.....

6 = AôAxB\* D

20Bar

Â = 8°#w0A



**? =#w0AB\* D**

V101                      P101                      P102-3                      M101-2

1

V101                      G102                      ZX111                      G102

G105   G111   G112                      P101

2

V101                      G102                      ZX111                      G102

G105   G111   G112                      P101                      P101-2

ZX111

V101

3

**=Aô =(¬&i**

1.

2. 20-30L

3.

41Bar

4.

5.

6. 4040 7 400L/H,

150-250L/H, 100 1000L/H

7. 304

8

**Ê =Aô = ø !**

4040	
	WTM-4040G-2
	4040
	7 *2
	4.1Mpa
	5—45
	PH 1--14
	15-20L
	400L/H (0.8MPa)
	150—250L/h
	100—1000L

**£ • Aô =4ú F**

1		50 L	SS316L		1	
2		Q=1.5m <sup>3</sup> /H H=32 m 1450r/m	SS316L		1	
3		Q=1.5m <sup>3</sup> /H H=35.0m 1450r/m	SS316L		1	SS316L
4		PV4040 -1-600P	FRP		2	
5		100 7	TFM		2	SUEZ 4040
6		7.5KW			1	Delta
7		60Bar	SS304		2	
8		0-420L/H			2	
9		0-2000 L/H			1	
10		1	SS304		1	
11		1	SS304			
12		1	SS304		1	
13			SS304		1	
14			SS304		1	
15					1	

## 9 •315 Ū -

60

1

2

17%

4040

M202-4040F		0.3	PVDF	SUEZ
M201-4040F		0.04	PS	SUEZ
F802-4040F		100000	PVDF	
F801-4040F		20000	PES PS	
F207-4040F		20000	PAN	SUEZ
F206-4040F		10000	PES	SUEZ
F205-4040F		8000	TFM	SUEZ
F204-4040F		5000	PES	SUEZ
F203-4040F		3500	TFM	SUEZ
F202-4040F		2500	TFM	SUEZ
F201-4040F		1000	TFM	SUEZ
D202-4040F		150-200	TFM	SUEZ
D201-4040F		300-400	TFM	SUEZ
A101-4040F		SE SG	TFM	SUEZ

i =Aô = 4{}





( )

( )